

---

## DIE KOLLEKTION | *Weiß*

---



3-502 CLIFT, Lamellenbreiten 16, 25, 35, 50 mm, R: 86%



2-506 BRUSH, Lamellenbreiten 16, 25, 35, 50 mm, R: 73%



2-600 OBSCURE, Lamellenbreiten 16, 25 mm, R: 72%



2-501 PALY, Lamellenbreiten 16, 25 mm, R: 76%



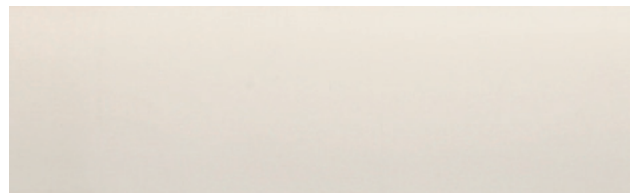
1-504 DIM, Lamellenbreiten 16, 25, 35, 50 mm, R: 78%



1-500 GLOSSY, Lamellenbreiten 16, 25 mm, R: 84%



2-505 DIM THERMO, Lamellenbreiten 25, 35 mm, R: 60%



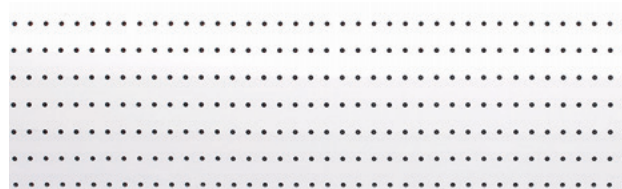
3-601 VELVET, Lamellenbreiten 25, 50 mm, R: 74%



2-503 SHINE, Lamellenbreiten 16, 25 mm, R: 87%



2-602 NETWORK, Lamellenbreite 25 mm, R: 61%



3-605 MESH, Lamellenbreite 25 mm, R: 74%



3-603 LUXURY, Lamellenbreite 25 mm, R: 69%



3-606 ICY, Lamellenbreiten 25, 35 mm, R: 73%



2-511 MESH, Lamellenbreiten 25, 50 mm, R: 71%



3-607 FROSTED, Lamellenbreiten 16, 25, 50 mm, R: 75%



3-604 MESH, Lamellenbreiten 25, 35 mm, R: 76%

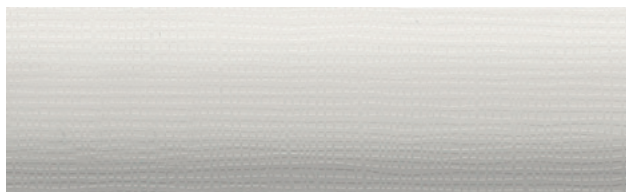


2-508 CLAM, Lamellenbreiten 16, 25 mm, R: 88%

---

## DIE KOLLEKTION | *Silber*

---



2-608 NETWORK, Lamellenbreite 25 mm, R: 77%



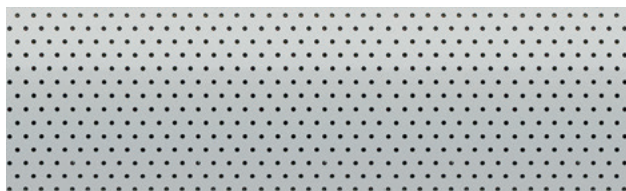
1-529 DIM, Lamellenbreiten 16, 25, 35, 50 mm, R: 48%



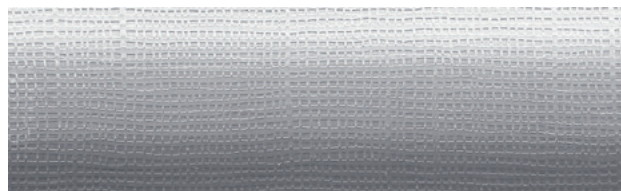
3-609 MARBLE, Lamellenbreiten 16, 25, 35 mm, R: 60%



2-524 BRUSH, Lamellenbreiten 16, 25, 35, 50 mm, R: 58%



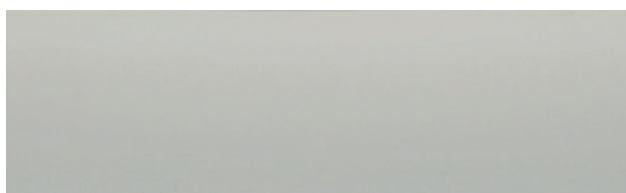
2-533 MESH, Lamellenbreite 25 mm, R: 44%



2-612 NETWORK, Lamellenbreite 25 mm, R: 48%

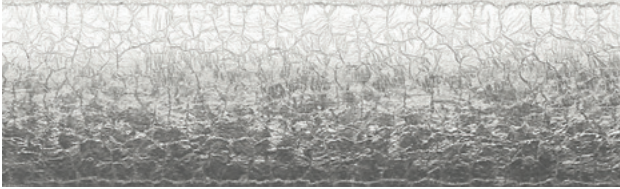


3-610 STRIPE, Lamellenbreite 25 mm, R: 48%



3-611 VELVET, Lamellenbreiten 25, 50 mm, R: 48%





3-613 LUXURY, Lamellenbreite 25 mm, R: 68%



3-614 MESH, Lamellenbreite 25 mm, R: 53%



1-519 FERRIC, Lamellenbreiten 16, 25, 35, 50 mm, R: 62%



1-512 SWIFT, Lamellenbreiten 16, 25, 35, 50 mm, R: 48%



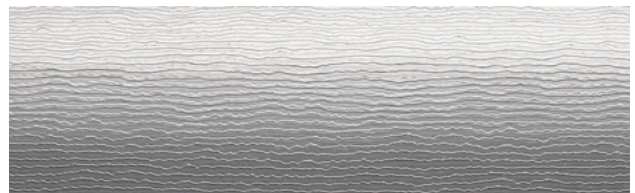
1-516 CHROME, Lamellenbreiten 16, 25, 35 mm, R: 66%



2-513 SWIFT THERMO, Lamellenbreiten 25, 35 mm, R: 73%



2-514 MESH, Lamellenbreiten 16, 25, 50 mm, R: 40%



2-523 WAVE, Lamellenbreiten 25, 50 mm, R: 63%

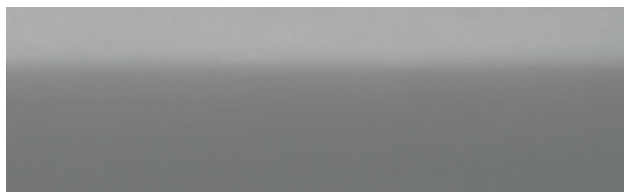


3-515 MESH, Lamellenbreiten 25, 35 mm, R: 41%

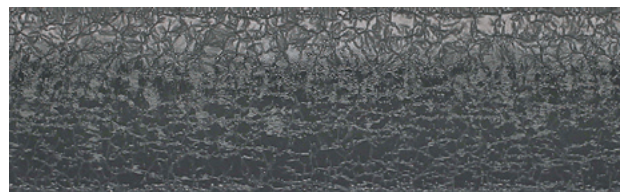
---

DIE KOLLEKTION | *Grau - Anthrazit /*

---



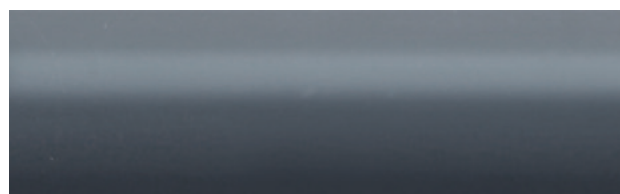
1-535 DIM, Lamellenbreiten 16, 25, 35, 50 mm, R: 22%



3-617 LUXURY, Lamellenbreite 25 mm, R: 12%



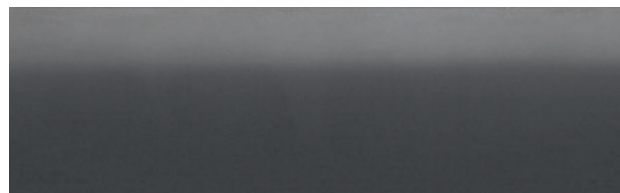
1-615 FERRIC, Lamellenbreiten 16, 25 mm, R: 29%



1-536 GLOSSY, Lamellenbreiten 16, 25 mm, R: 13%



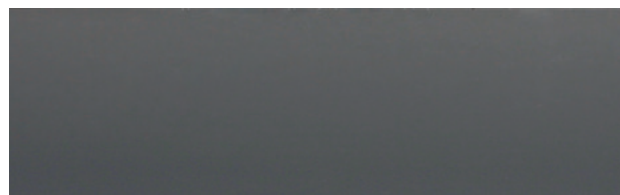
2-616 POMP, Lamellenbreiten 16, 25, 35, 50 mm, R: 19%



1-618 DIM, Lamellenbreiten 16, 25, 35, 50 mm, R: 12%



2-537 SHINE, Lamellenbreiten 16, 25 mm, R: 19%

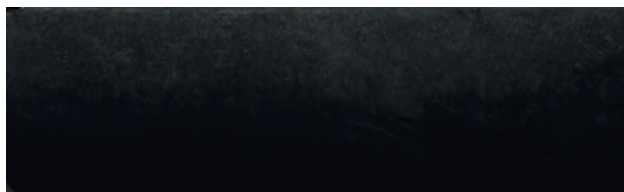


3-619 VELVET, Lamellenbreite 25 mm, R: 12%

---

*Schwarz*

---



3-620 VELVET, Lamellenbreite 25 mm, R: 4%



2-622 MESH, Lamellenbreiten 25, 50 mm, R: 4%



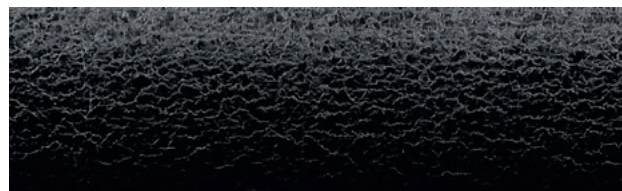
1-540 GLOSSY, Lamellenbreite 25 mm, R: 5%



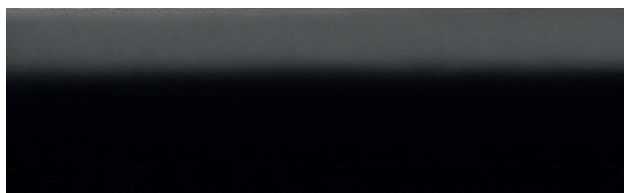
3-623 MESH, Lamellenbreite 25 mm, R: 4%



2-621 OBSCURE, Lamellenbreiten 16, 25 mm, R: 4%



3-624 LUXURY, Lamellenbreite 25 mm, R: 5%



1-539 DIM, Lamellenbreiten 16, 25, 35, 50 mm, R: 0%



3-625 STRIPE, Lamellenbreite 25 mm, R: 4%



---

## DIE KOLLEKTION | *Beige / Natur*

---



3-626 FROSTED, Lamellenbreiten 16, 25 mm, R: 71%



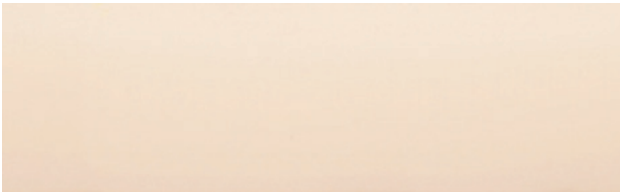
3-630 STUCCO, Lamellenbreite 25 mm, R: 81%



1-627 DIM, Lamellenbreiten 16, 25, 35, 50 mm, R: 69%



3-631 STRIPE, Lamellenbreite 25 mm, R: 75%



3-628 VELVET, Lamellenbreite 25 mm, R: 71%



2-546 BRUSH, Lamellenbreiten 16, 25, 35, 50 mm, R: 64%



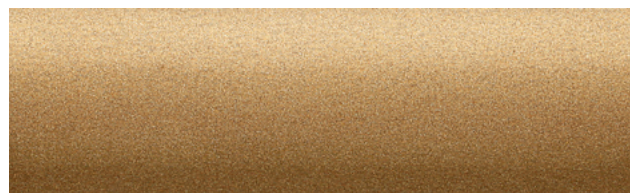
2-550 MESH, Lamellenbreiten 25, 50 mm, R: 69%



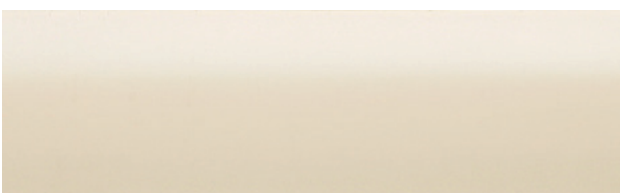
2-632 FERRIC, Lamellenbreiten 16, 25, 35, 50 mm, R: 57%



3-629 MESH, Lamellenbreite 25 mm, R: 72%



2-633 GLORY, Lamellenbreite 25 mm, R: 46%



1-548 DIM, Lamellenbreiten 16, 25, 35, 50 mm, R: 75%



3-634 RUSTY, Lamellenbreite 25 mm, R: 16%



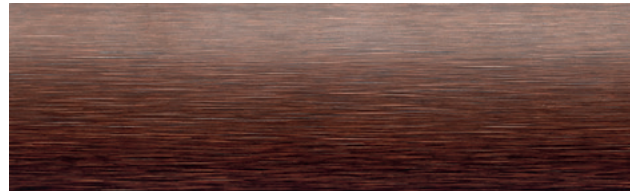
3-635 OBSCURE, Lamellenbreite 25 mm, R: 7%



3-641 STRIPE, Lamellenbreite 25 mm, R: 33%



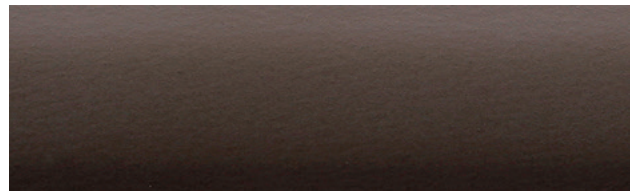
1-636 DIM, Lamellenbreiten 16, 25, 35 mm, R: 11%



2-642 BRUSH, Lamellenbreite 25 mm, R: 7%



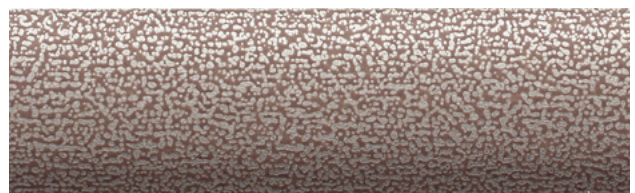
2-637 FERRIC, Lamellenbreiten 16, 25 mm, R: 46%



2-643 OBSCURE, Lamellenbreiten 16, 25, 50 mm, R: 12%



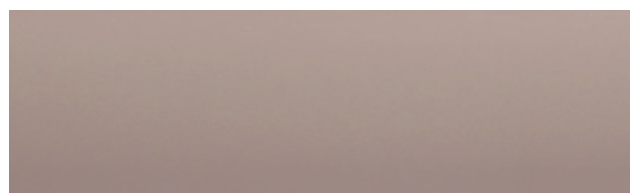
2-638 BRUSH, Lamellenbreite 25 mm, R: 41%



3-644 ICY, Lamellenbreite 25 mm, R: 38%



2-639 BRUSH, Lamellenbreiten 16, 25 mm, R: 54%



3-645 VELVET, Lamellenbreiten 25, 50 mm, R: 34%



3-640 FROSTED, Lamellenbreite 25 mm, R: 33%



2-646 NETWORK, Lamellenbreite 25 mm, R: 69%



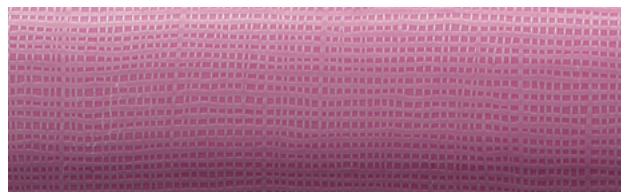
---

DIE KOLLEKTION | *Rosa-Violett / Rot-Apricot/*

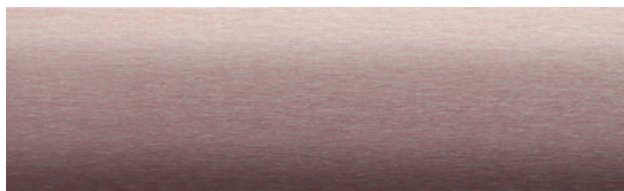
---



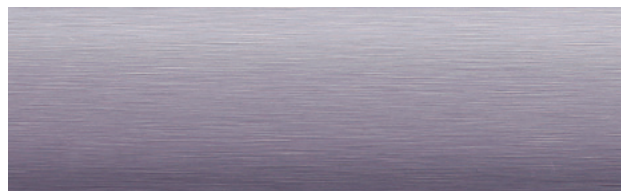
3-647 FROSTED, Lamellenbreiten 16, 25 mm, R: 66%



2-653 NETWORK, Lamellenbreite 25 mm, R: 25%



2-648 GLOW, Lamellenbreite 25 mm, R: 25%



2-654 BRUSH, Lamellenbreiten 16, 25, 35 mm, R.: 51%



2-649 BRUSH, Lamellenbreiten 16, 25, 35 mm, R: 58%



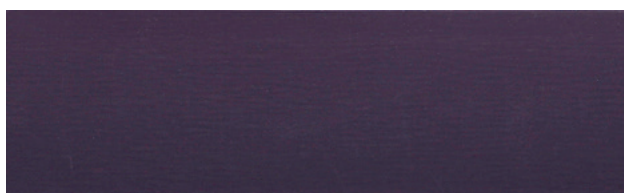
1-568 DIM, Lamellenbreiten 16, 25, 35, 50 mm, R: 15%



3-650 OBSCURE, Lamellenbreite 25 mm, R: 15%



3-655 OBSCURE, Lamellenbreite 25 mm, R: 14%



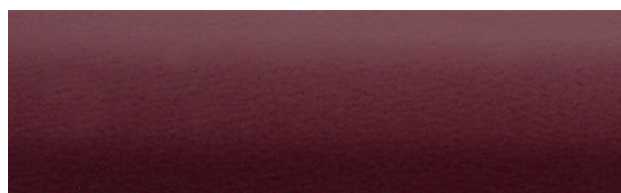
3-651 VELVET, Lamellenbreiten 25, 50 mm, R: 5%



1-569 DIM, Lamellenbreiten 16, 25 mm, R: 7%



3-652 DIM, Lamellenbreite 25 mm, R: 11%



3-656 OBSCURE, Lamellenbreiten 16, 25, 35 mm, R: 9%

---

*Gelb-Orange*

---



3-657 CLIFT, Lamellenbreite 25 mm, R: 13%



3-564 CLIFT, Lamellenbreiten 16, 25 mm, R: 76%



3-658 VELVET, Lamellenbreiten 25, 50 mm, R: 10%



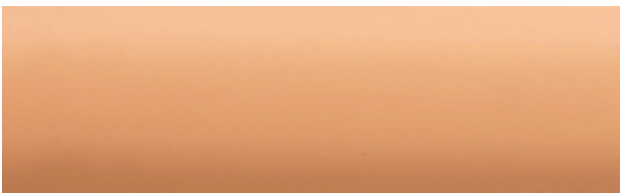
3-662 VELVET, Lamellenbreite 25 mm, R: 45%



2-659 GLOW, Lamellenbreiten 25, 35 mm, R: 10%



1-560 DIM, Lamellenbreiten 16, 25, 35, 50 mm, R: 60%



2-566 PALY, Lamellenbreiten 16, 25 mm, R: 43%



1-561 GLOSSY, Lamellenbreiten 16, 25, 35 mm, R: 46%



2-660 GLOW, Lamellenbreite 25 mm, R: 59%



2-663 GLOSSY, Lamellenbreite 25 mm, R: 59%



2-661 GLOW, Lamellenbreiten 25, 35 mm, R: 45%

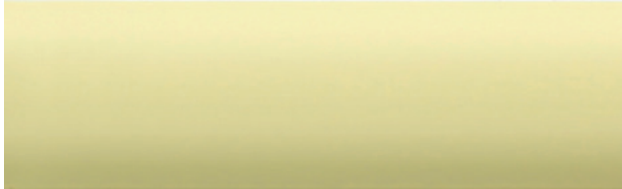


1-563 DIM, Lamellenbreiten 16, 25 mm, R: 37%

---

## DIE KOLLEKTION | *Grün*

---



1-664 DIM, Lamellenbreiten 16, 25, 35, 50 mm, R: 81%



1-668 DIM, Lamellenbreiten 25, 35 mm, R: 47%



3-665 OBSCURE, Lamellenbreiten 16, 25 mm, R: 44%



2-669 BRUSH, Lamellenbreiten 16, 25 mm, R: 59%



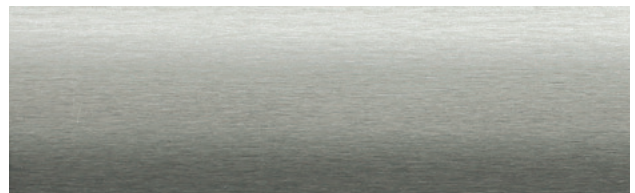
2-666 GLOSSY, Lamellenbreite 25 mm, R: 57%



2-670 GLOW, Lamellenbreiten 25, 35, 50 mm, R: 42%



3-667 VELVET, Lamellenbreite 25 mm, R: 40%



2-671 GLOW, Lamellenbreite 25 mm, R: 52%



---

*Blau-Petrol*

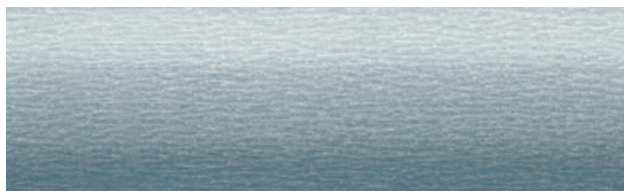
---



2-672 GLOW, Lamellenbreite 25 mm, R: 52%



2-675 GLOSSY, Lamellenbreite 25 mm, R: 20%



2-673 GLOW, Lamellenbreiten 25, 35, 50 mm, R: 40%



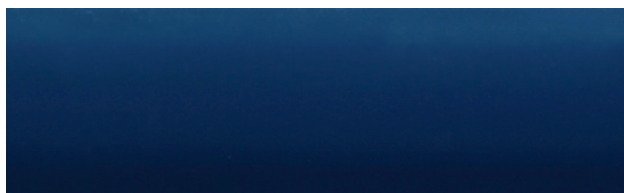
3-676 VELVET, Lamellenbreite 25 mm, R: 41%



1-584 DIM, Lamellenbreiten 16, 25, 35 mm, R: 11%



2-677 BRUSH, Lamellenbreite 25 mm, R: 24%



1-674 DIM, Lamellenbreiten 16, 25, 35, 50 mm, R: 8%



3-678 CLIFT, Lamellenbreite 25 mm, R: 52%